

I'M

living alone and I'm doing

FINE

... but I wish someone would stop

BY

to visit and share a meal with. Being by

MYSELF

day after day is getting hard.



United Way of
Mid & South Jefferson County

Students who face challenges at school and distractions at home, Moms who need a safe place to start over, the child who is struggling with a clinical delay.. these and so many more are the challenges real people face every day.

Just last year, more than 50,000 people were helped by our programs and the impact doesn't stop there. United Way partners with **23 local nonprofits** and invests in **35 programs** in the areas of Youth Education, Health, and Financial Stability. Our approach to impact is intentional: we listen, ask questions, analyze data and measure outcomes. Utilizing that information, we invest in our community's most pressing needs.

By campaigning with us, you are making a difference right here in Mid & South Jefferson County. That's the beauty of supporting United Way: it's personal and it's local. Your gift impacts people you know and care about at a time when the need is greater than ever.

Because of you, Hope Happens.

Impact Highlight

We don't make decisions alone.

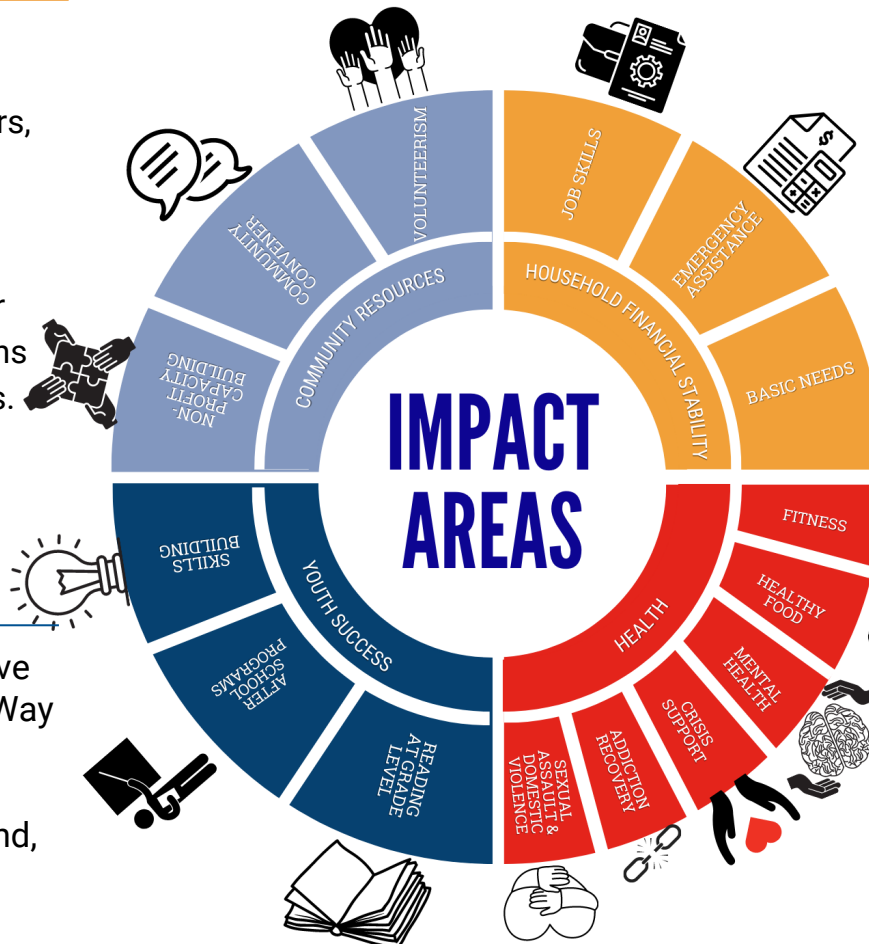
Our Board of Directors, Community Investment Grant Committee, and Volunteers work year round to find solutions for the highest needs.

Impact Highlight

1 in 3 families receive help from a United Way Program

It could be your friend, neighbor, or family

50,500 people were helped in 2021



Impact Highlight

340,600 meals served to individuals and families who couldn't afford food

2,700 families helped during financial hardship

200,000 meals delivered for homebound seniors

305 children placed in a safe home

30,300 students helped to succeed in school

8,900 safe nights for survivors of abuse

18,300 therapy/counseling sessions for children and adults

